

SA & INTERNATIONAL ART 28th July @14H30

401. SIEDLE, BARBARA – SOUTH AFRICAN (1946-), Watercolour – a Pair – Signed, Hadedu Ibis and Crowned Cranes, 53x36cm each. R800/1200



402. SIEDLE, BARBARA – SOUTH AFRICAN (1946-), Watercolour – a Pair – Signed, Whiteface Ducks and Blacksmith Plovers, 53x36cm each. R800/1200



403. HOEFSLOOT, TED – SOUTH AFRICAN (1930-), Oil on Canvas laid down on Board – Signed, Titled on Reverse, Mountain Scene with Farm, 44x59cm. R3000/5000



404. TOSE, MARTIN QGIBINSIZI – SOUTH AFRICAN (1958 – 2004), Oil on Paper – Signed and Dated '95, Mother and Child, 42x58cm. R3000/4000



405. SIBEKO, PETER – SOUTH AFRICAN (1940-), Oil and Sand on Paper – Signed and Dated '99, Figures and Shacks, 25x38cm. R1500/2000



SA & INTERNATIONAL ART 28th July @14H30

406. FERN. EMILY – SOUTH AFRICAN (1881 – 1953), Oil on Board – Signed and Dated 1951, Rocky Coastal Landscape, 40x50cm. R4000/6000



407. SPEARS, FRANK SYDNEY – SOUTH AFRICAN (1906 – 1991), Oil on Board – Signed, Farmhouses, 35x45cm. R5000/7000



408. GARIZIO, GIAN-PIERO – SOUTH AFRICAN (1931-), Oil on Canvas – Signed, Kalk Bay, 48x59cm. R4000/6000



409. GRATTAN, REGINALD A. – SOUTH AFRICAN (20TH CENTURY), Oil on Canvas – Signed, Cape Farmhouse in Landscape, 32x47cm. R1200/1500



410. SEKHAOLELA, SOLOMON – SOUTH AFRICAN (1937-), Oil on Paper – Signed, Figures in Shanty Town, 56x39cm. R1000/1500



SA & INTERNATIONAL ART 28th July @14H30

411. **SEKHAOLELA, SOLOMON – SOUTH AFRICAN (1937-), Oil on Paper – Signed and Dated '07, Figures in Shanty Town, 56x39cm. R1000/1500**



412. **HOEFSLOOT, TED – SOUTH AFRICAN (1930-), Oil on Canvas laid down on Board – Signed, Titled on Reverse, Scene near Zaaimansdal, 49x74cm. R4000/6000**



413. **HADEN, SIR FRANCIS SEYMOUR – BRITISH (1818 – 1910), Etching – a Pair – Signed, in Pencil, one dated '41 in the plate, Hands of a Pianist and Hands of a Cellist, 17x21cm each. R1000/1500**



414. **BURWITZ, NILS – SOUTH AFRICAN (1940-), Screenprint – Signed in Pencil by the Artist and Poet Stephen Gray, Numbered 116/240, The Beast's History, 75x54cm. R700/900**



415. **MARAIS, WESSEL – SOUTH AFRICAN (1935 – 2009), Oil on Board – Signed, Still Life of Cosmos, 75x50cm. R6000/8000**



SA & INTERNATIONAL ART 28th July @14H30

416. **KOKOSKA, OSKAR** after – AUSTRIAN (1886 – 1980), Oil on Board – Signed with Initials, Portrait of a Gentleman, 22x17cm. R2000/3000



417. **SHAPSHAK, RENE** – SOUTH AFRICAN (1899 – 1985), Monotype – Signed and Dated 1941, Tropical Lagoon, 16x22cm. R600/800



418. **KNOWLAND, DENNIS GEORGE** – BRITISH (20TH CENTURY), Oil on Canvas – Signed and Dated '73, Farmhouses in Valley, 74x55cm. R1500/2000



419. **GARIZIO, GIAN-PIERO** – SOUTH AFRICAN (1931-), Oil on Board – Signed, Children and Cape Dutch Homestead, 75x60cm. R5000/7000



420. **DANIELL, SAMUEL** – BRITISH (1775 – 1811), Coloured Engraving – Published April 15th 1804, Kaffers on a March, 36x47cm. R1000/2000



SA & INTERNATIONAL ART 28th July @14H30

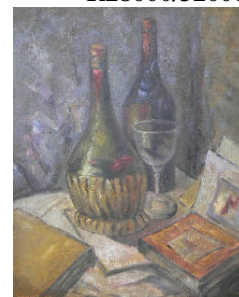
421. **FERGUSON, JOHN KENNETH – SOUTH AFRICAN (1885 – 1967), Oil on Board – Signed, River, Drakensberg, 40x50cm.**
R1500/2000



422. **GOODMAN, ROBERT GWELO – SOUTH AFRICAN (1871 – 1939), Oil on Canvas – Signed with Initials, Table Mountain, 19x23cm.**
R35000/45000



423. **ROSE-INNES, ALEXANDER – SOUTH AFRICAN (1915 – 1996), Oil on Canvas Board – Signed, Still Life, 32x26cm.**
R28000/32000



424. **GARIZIO, GIAN-PIERO – SOUTH AFRICAN (1931-), Oil on Board – Signed, Still Life of Flowers, 30x40cm.**
R4000/6000



425. **GARIZIO, GIAN-PIERO – SOUTH AFRICAN (1931-), Oil on Canvas – Signed, Simon's Town, 40x50cm.**
R5000/7000



426. PORTCHIE, JOHANNES – SOUTH AFRICAN (20/21ST CENTURY), Oil on Canvas – Signed, Farmhouse in Landscape, 20x20cm. R4000/6000



427. MORETTI FOGGIA, MARIO – ITALIAN (1882 – 1954), Oil on Board – Signed, Paper Label on Reverse, In Commino, 40x50cm. Provenance: - Galleria Leonardo da Vinci, Corso Umberto R28000/32000



428. MORETTI FOGGIA, MARIO – ITALIAN (1882 – 1954), Oil on Board – Signed, Paper Label on Reverse, Sotto la Neve, 40x50cm. Provenance: - Galleria Leonardo da Vinci, Corso Umberto R28000/32000



429. CATHERINE, NORMAN CLIVE – SOUTH AFRICAN (1949-), Airbrush – Signed, Dated 1978 and Titled, Forgotten Stairway, 55x75cm. R6000/8000



430. WELZ, JEAN MAX – SOUTH AFRICAN (1900 – 1975), Charcoal – Unsigned, Portrait of a Lady, 58x43cm. Provenance:- Strauss & Co. R8000/12000



431. SPILHAUS, NITA – SOUTH AFRICAN (1878 – 1967), Oil on Board – Unsigned – Certificate on reverse, Coastal Landscape, 25x27cm. R25000/35000



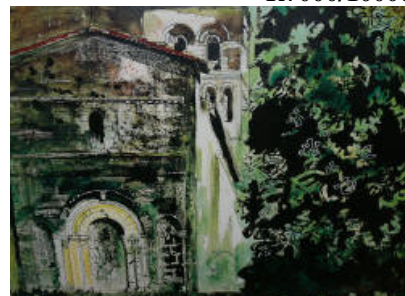
432. KANDINSKY, WASSILY – RUSSIAN (1866 – 1944), Lithograph – Signed and Number IX/XXI, Untitled, 36x24cm. R14000/18000



433. DE JONGH, GABRIEL – SOUTH AFRICAN (1913 – 2004), Oil on Canvas – Signed, Cottage beside River in Extensive Landscape, 60x90cm. R14000/18000



434. PIPER, JOHN – BRITISH (1903 – 1992), Screenprint – Signed and Numbered 36/70, La Chapelle St. Robert, Dordogne – Levinson 189, 70x102cm. R7000/10000



435. KASIM, PAUL – (20TH CENTURY), Acrylic – Signed, African Market, 120x100cm. R4000/6000



436. BRITZ, PHILLIP – SOUTH AFRICAN (20/21ST CENTURY), Oil on Board – Signed, Cape Fishing Cottages, 24x34cm. R1200/1500



437. BRITZ, PHILLIP – SOUTH AFRICAN (20/21ST CENTURY), Oil on Board – Signed, Cape Fishing Cottages, 24x34cm. R1200/1500



438. RENNIE, RICHARD – SOUTH AFRICAN (1932-), Watercolour – Signed, Extensive Landscape, 44x68cm. R1500/2000

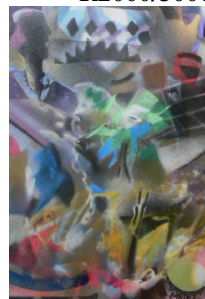


439. AYNSCOMB-HARRIS, MARTIN JOHN – BRITISH (1937-), Gouache – Signed, Church in Winter Landscape, 54x74cm. R500/700



SA & INTERNATIONAL ART 28th July @14H30

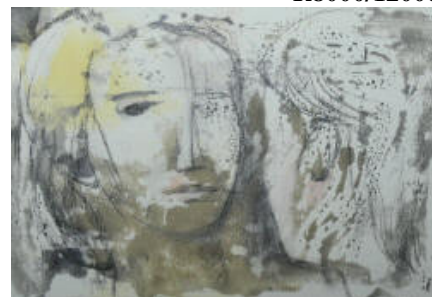
440. MASEKO, JOSEPH RAMAPULANE – SOUTH AFRICAN (1940 – 2008), Pastel – Signed, African Celebration, 67x47cm.
R2000/3000



441. HOEFSLOOT, TED – SOUTH AFRICAN (1930-), Oil on Canvas laid down on Board – Signed, Titled on Reverse, Groot Drakenstein Berge, 44x59cm.
R3000/5000



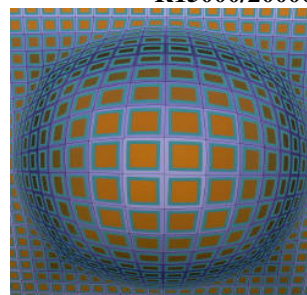
442. MOORE, HENRY – BRITISH (1898 – 1986), Lithograph – Signed, Artist Proof, Untitled, 19x25cm.
R8000/12000



443. PORTCHIE, JOHANNES – SOUTH AFRICAN (20/21ST CENTURY), Oil on Canvas – Signed, Titled on Reverse, Seun met Vlieer Geniet die Mooi Wense, 40x25cm.
R8000/12000



444. VASARELY, VICTOR – HUNGARIAN/FRENCH (1906 – 1997), Silkscreen – Signed and Numbered 56/75, Vancouver, 60x60cm.
R15000/20000

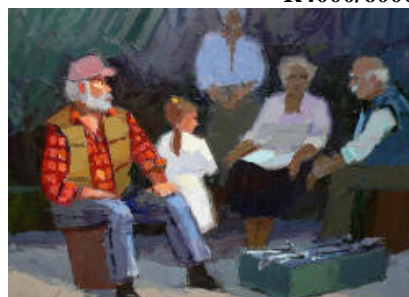


SA & INTERNATIONAL ART 28th July @14H30

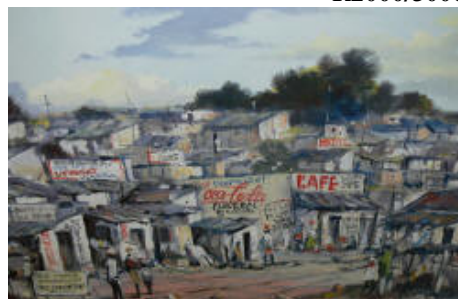
445. PARSONS, MIKE – SOUTH AFRICAN (20/21ST CENTURY), Oil on Board – Signed, Couple in a Restaurant, 58x76cm. R4000/6000



446. PARSONS, MIKE – SOUTH AFRICAN (20/21ST CENTURY), Oil on Board – Signed, Fish Seller, 53x71cm. R4000/6000



447. BADENHORST, FRANCOIS – SOUTH AFRICAN (1934-), Oil on Board – Signed, Dr. E. Finger, 59x88cm. R2000/3000



448. BAKER, KENNETH – SOUTH AFRICAN (1931 – 1995), Oil on Board – Signed, Five Figures, 41x30cm. R7000/9000



449. SEKOTO, GERARD – SOUTH AFRICAN (1913 – 1993), Pastel – Signed, Seated Nude, 58x49cm. Provenance: - Strauss & Co. R40000/60000



450. HERRING, JOHN FREDERICK – BRITISH (1795 – 1865), Coloured Engraving – circa 1845, The Start for the Derby, 60x107cm. R8000/12000



451. TURNER, J.M.W. after – BRITISH, Oil on Canvas – Unsigned, Abbey beside a River, 36x46cm. R5000/7000



452. KOCH, FRANCOIS – SOUTH AFRICAN (1944-), Oil on Canvas Board – Signed and Dated '69, Kudu in Dry River Bed, 45x60cm. R7000/9000



453. PORTCHIE, JOHANNES – SOUTH AFRICAN (20/21ST CENTURY), Oil on Canvas – Signed, Titled on Reverse, Die Touspringers Geniet die Mooi Wense, 40x25cm. R8000/12000



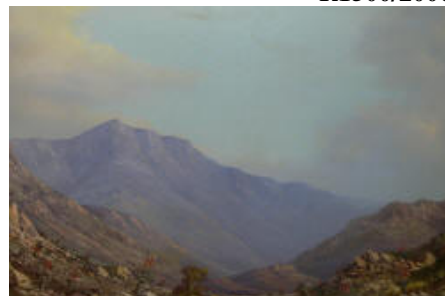
454. RAUSCHENBERG, ROBERT – AMERICAN (1925 – 2008), Lithograph, Pass for Two, 70x50cm. R18000/22000



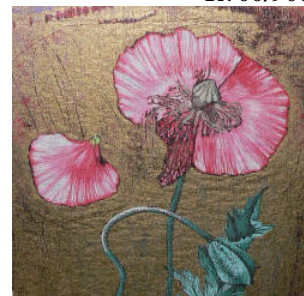
455. **MUNRO, PAUL – SOUTH AFRICAN (20/21ST CENTURY), Oil on Board – Signed, Coastal Landscape, Western Cape, 58x88cm. R2500/3500**



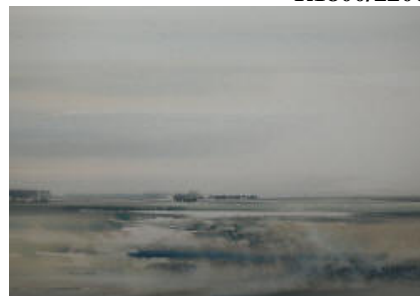
456. **VAN NIEKERK, DANIE – SOUTH AFRICAN (20/21ST CENTURY), Oil on Board – Signed and Dated '01, Mountainous Landscape, 60x90cm. R1500/2000**



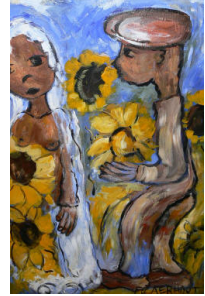
457. **HOBBS, PHILIPPA – SOUTH AFRICAN (1955-), Coloured Etchings – Pair – Signed, Inscribed, Numbered 1/16 and Dated '94, Somneferum and Cape Erica, 15x13cm each. R700/900**



458. **HALL, PETER – SOUTH AFRICAN (1958-), Watercolour – Signed, Extensive Landscape, 45x62cm. R1800/2200**



459. **CLAERHOUT, FRANS MARTIN – SOUTH AFRICAN (1919 – 2006), Oil on Board – Signed, The Bride, 73x49cm. R35000/45000**



460. BOSCH, CORNELIUS – SOUTH AFRICAN (20TH CENTURY), Oil on Canvas – Signed, Still Life of Flowers, 73x89cm. R6000/8000



461. DONALDSON, KIM – SOUTH AFRICAN (1952-), Watercolour – Signed, Sable Bulls ever Alert, 73x108cm. Provenance:- Everard Read Gallery, Johannesburg R14000/18000

