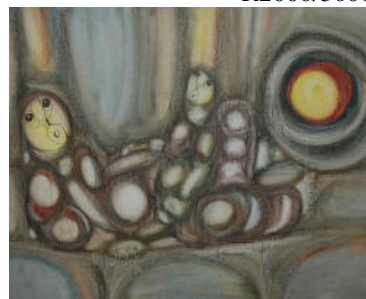


SA & INTERNATIONAL ART 1ST FEBRUARY @11H30 – note change of time

351. NTUKWANA, HARGREAVES – SOUTH AFRICAN (1938 – 1999), Oil on Canvas Board – Signed, Two Figures at Sunset, 94x106cm. R2000/3000



352. ZEELIE, ADELIO ZAGNI – SOUTH AFRICAN (1911 – 1991), Oil on Board – Signed and Titled, Fisherwomen, Durban, 29x24cm. R3000/4000



353. SOLOMON, WILLIAM E. GLADSTONE – SOUTH AFRICAN (1880 – 1956), Oil on Canvas – Signed and Dated 1952, Still Life of Roses, 45x60cm. R2000/3000



354. HASEGAWA, SHOICHI – JAPANESE/FRENCH (1929-), Lithograph – Signed, Titled and Numbered I/XXV Vallee des Rois, 58x49cm. R1500/2000

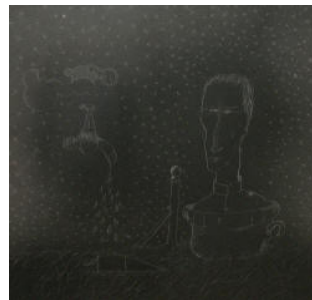


355. PARSONS, MIKE – SOUTH AFRICAN (20/21ST CENTURY), Oil on Board – Signed, Tea Garden, 53x70cm. R3500/4500



SA & INTERNATIONAL ART 1ST FEBRUARY @11H30 – note change of time

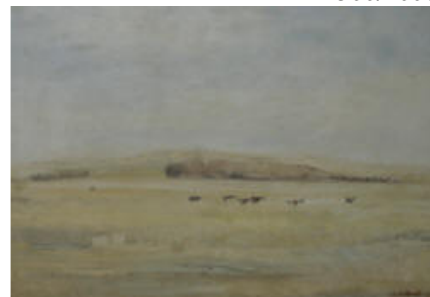
356. CATHERINE, NORMAN CLIVE – SOUTH AFRICAN (1949-), Lithograph – Signed, Proof, Untitled, 20x21cm. R2000/3000



357. SDOYA, CARLO – SOUTH AFRICAN (1914 – 1996), Oil on Board – Signed, Still Life of Roses, 40x50cm. R1400/1800



358. WESTBROOK, WALTER EDWARD – SOUTH AFRICAN (20TH CENTURY), Oil on Board – Signed, Naby Kimberley, 30x42cm. R1500/2000



359. COIGNARD, JAMES – FRENCH (1925 – 2008), Lithograph – Signed and Numbered 61/90, Untitled, 29x19cm. R1000/1500



360. ANDERSEN, NILS SEVERIN – SOUTH AFRICAN (1897 – 1972), Oil on Board – Signed, Stormy Sea, 43x58cm. R4000/6000

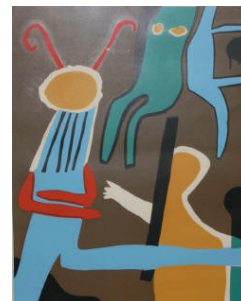


SA & INTERNATIONAL ART 1ST FEBRUARY @11H30 – note change of time

361. EUROPEAN SCHOOL – 19TH CENTURY, Oil on Canvas – Unsigned, Money Lender, 52x43cm. R6000/8000



362. BATTISS, WALTER WHALL – SOUTH AFRICAN (1906 – 1982), Lithograph – Signed and Titled, Horned Presence, 46x35cm. R8000/12000



363. BRECHER, BRUNETTE – SOUTH AFRICAN (20TH CENTURY), Oil on Board – Signed and Dated 1995, Still Life of Flowers, 45x60cm. R1800/2200



364. CATHERINE, NORMAN CLIVE – SOUTH AFRICAN (1949-), Airbrush – Signed and Titled, Still Life, 30x21cm. R4000/6000



365. HANCOCK, BRUCE – SOUTH AFRICAN (1912 – 1990), Oil on Board – Signed, Rural Dwelling in Extensive Landscape, 30x40cm. R6000/8000



SA & INTERNATIONAL ART 1ST FEBRUARY @11H30 – note change of time

366. OLDERT, JOHAN – SOUTH AFRICAN (1912 – 1984), Oil on Board – Signed, Figures on Road beneath Gum Trees, 40x50cm. R5000/7000



367. ZEELIE, ADELIO ZAGNI – SOUTH AFRICAN (1911 – 1991), Oil on Board – Signed, Dated 1964 and Titled, Cederburg, Kaap, 35x50cm. R1500/2000



368. WYLLIE, WILLIAM LIONEL – BRITISH (1851 – 1931), Oil on Canvas – Signed, Dated '07 and Titled on Reverse, View of False Bay from St. James, 33x46cm. R3000/4000



369. PAYNTER, CATHERINE – SOUTH AFRICAN (1949-), Mixed Media on Canvas – Signed on Reverse and Titled, Cape Hermes, near St. Johns, 90x127cm. Provenance:- Everard Read Gallery, Johannesburg R18000/22000



370. BOYLEY, ERROL STEPHEN – SOUTH AFRICAN (1918 – 2007), Oil on Board – Signed, Farmhouse in Landscape with Blossom, 45x60cm. R28000/32000



SA & INTERNATIONAL ART 1ST FEBRUARY @11H30 – note change of time

371. PARSONS, MIKE – SOUTH AFRICAN (20/21ST CENTURY), Oil on Board – Signed, Fish Market, 53x70cm..
R3500/4500



372. BATTISS, WALTER WHALL – SOUTH AFRICAN (1906 – 1982), Lithograph – Signed and Numbered 5/25,
Untitled, 37x36cm.
R7000/9000



373. KAY, DOROTHY – SOUTH AFRICAN (1886 – 1964), Etching – Signed and Titled, Fingo Witch Doctor,
24x19cm.
R3000/4000



374. BOTHA, DAVID JOHANNES – SOUTH AFRICAN (1921 – 1995), Linocut – Signed, Still Life, 30x23cm.
R800/1200



375. ALLEN, NORAH – SOUTH AFRICAN (20TH CENTURY), Oil on Board – Signed, Avenue of Jacaranda Trees,
33x24cm.
R600/800



SA & INTERNATIONAL ART 1ST FEBRUARY @11H30 – note change of time

376. HOEFSLOOT, TED – SOUTH AFRICAN (1930-), Oil on Board – Signed, Mountain Pass, 50x75cm.

R2000/3000



377. HETHERINGTON, CONSTANCE – SOUTH AFRICAN (20TH CENTURY), Oil on Board – Signed, Dated 1961, Titled on Reverse, Near Meiringspoort, Cape, 65x88cm.

R1000/1500



378. NOTROM, C. – EUROPEAN (20TH CENTURY), Oil on Canvas – Signed, Still Life of Flowers, 50x40cm.

R1500/2000



379. MARAIS, LUTHER – SOUTH AFRICAN (1935-), Oil on Board – Signed and Dated 2001, Rural Homestead in Landscape, 44x58cm.

R2000/3000



380. BEUKES, SANDY – SOUTH AFRICAN (1957-), Pastel – Signed and Titled, Tuscany, 28x48cm. R1000/1500



SA & INTERNATIONAL ART 1ST FEBRUARY @11H30 – note change of time

381. DE KUYPER, G. – EUROPEAN (19/20TH CENTURY), Oil on Canvas – Signed and Dated 1911, Puppy and Kittens, 63x89cm. R6000/8000



382. MAHLANGU, SPEELMAN – SOUTH AFRICAN (1958 – 2004), Oil on Canvas – Signed, Titled on Reverse, Sisters, 36x53cm. R6000/8000



383. ALBERTYN, MICHAEL – SOUTH AFRICAN (1938-), Oil on Canvas – Signed, Coastal Scene, 60x90cm. R2000/3000



384. BOYS, GEORGE – SOUTH AFRICAN (1930-), Oil on Board – Signed and Dated '67, Titled on Reverse, In the Beginning, 180x120cm. R6000/8000



385. KOENIG, DEZSO – SOUTH AFRICAN (1902 – 1972), Oil on Board – Signed, Still Life of Roses, 60x45cm. R1000/1500



SA & INTERNATIONAL ART 1ST FEBRUARY @11H30 – note change of time

386. KING, ERNEST – SOUTH AFRICAN (20TH CENTURY), Oil on Board – Signed, African Hut in Mountainous Landscape, 24x34cm. R1800/2200



387. CARTER, SYDNEY – SOUTH AFRICAN (1874 – 1945), Watercolour – Signed, Farmhouse and Gum Tree in Landscape, 25x38cm. R1500/2000



388. EUROPEAN SCHOOL (19TH CENTURY), Oil on Canvas – Unsigned, Still Life of Flowers, 87x66cm. R7000/9000



389. COLEMAN, MICHAEL – AMERICAN (1946-), Oil on Panel – Signed, In the North Woods, Red Fox, 61x76cm. Provenance:- Everard Read Gallery R25000/35000



390. BOYLEY, ERROL – SOUTH AFRICAN (1918 – 2007), Oil on Board – Signed, Farmhouse in Treed Landscape, 45x60cm. R28000/32000



SA & INTERNATIONAL ART 1ST FEBRUARY @11H30 – note change of time

391. BOSHOFF, ADRIAAN – SOUTH AFRICAN (1935 – 2007), Oil on Canvas Board – Signed, Figures in Extensive Landscape, 55x85cm. R60000/80000



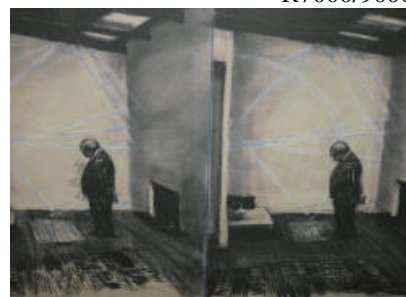
392. FENI-MHLABA, DUMILE – SOUTH AFRICAN (1942 – 1991), Lithograph – Signed, Titled and Dated 1991, Peace Eddies Theme, 76x57cm. R12000/15000



393. DALI, SALVADOR – SPANISH (1904 – 1989), Lithograph – Signed and Numbered 92/195, Untitled, 75x54cm. R5000/7000



394. KENTRIDGE, WILLIAM JOSEPH – SOUTH AFRICAN (1955-), Photolithograph – Signed and Numbered 181/220, Stereoscope Poster, 63x92cm. R7000/9000



395 – 419 NO LOTS